



## The Avenue, Thetford, IP26 4RF

Rent - £2,350 PCM      Deposit - £2,711

Nestled in the charming area of The Avenue, Brookville, Thetford, this modern detached bungalow offers a delightful blend of comfort and convenience. With four spacious bedrooms, this property is perfect for families or those seeking extra space for guests or a home office. The well-appointed layout includes a welcoming reception room, ideal for relaxation and entertaining.

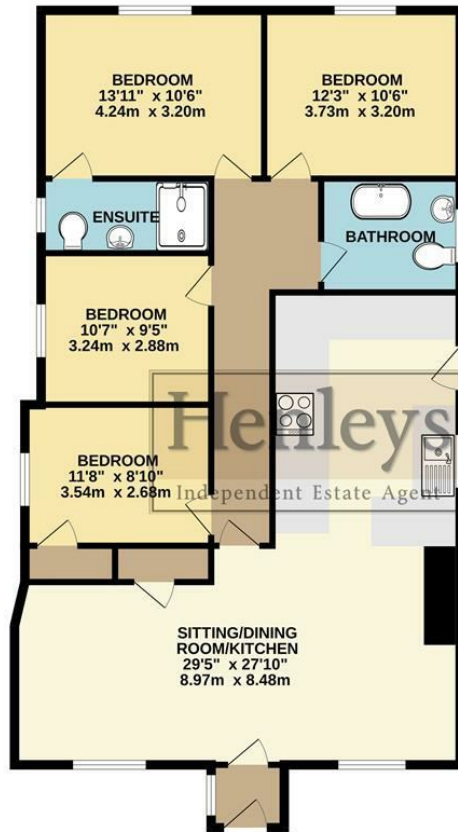
The bungalow features two bathrooms, ensuring ample facilities for all residents. The modern design and thoughtful layout create a warm and inviting atmosphere throughout the home.

- DETACHED BUNGALOW
- PERFECT VILLAGE LOCATION
- 2 BATH
- OPEN PLAN KITCHEN/DINER/LIVING ROOM
- ENCLOSED YARD
- FOUR BEDROOMS
- APPLIANCES BUILT-IN
- HARD FLOORING THROUGHOUT
- OIL HEATING/ EPC RATING C
- AMPLE OFF ROAD PARKING / COUNCIL TAX BAND : B



Council Tax Band: B - EPC Rating: C 69

GROUND FLOOR  
1265 sq.ft. (117.5 sq.m.) approx.



TOTAL FLOOR AREA : 1265 sq.ft. (117.5 sq.m.) approx.

Whilst every attempt has been made to ensure the accuracy of the floorplan contained here, measurements of doors, windows, rooms and any other items are approximate and no responsibility is taken for any error, omission or mis-statement. This plan is for illustrative purposes only and should be used as such by any prospective purchaser. The services, systems and appliances shown have not been tested and no guarantee as to their operability or efficiency can be given.  
Made with Metropix ©2023

